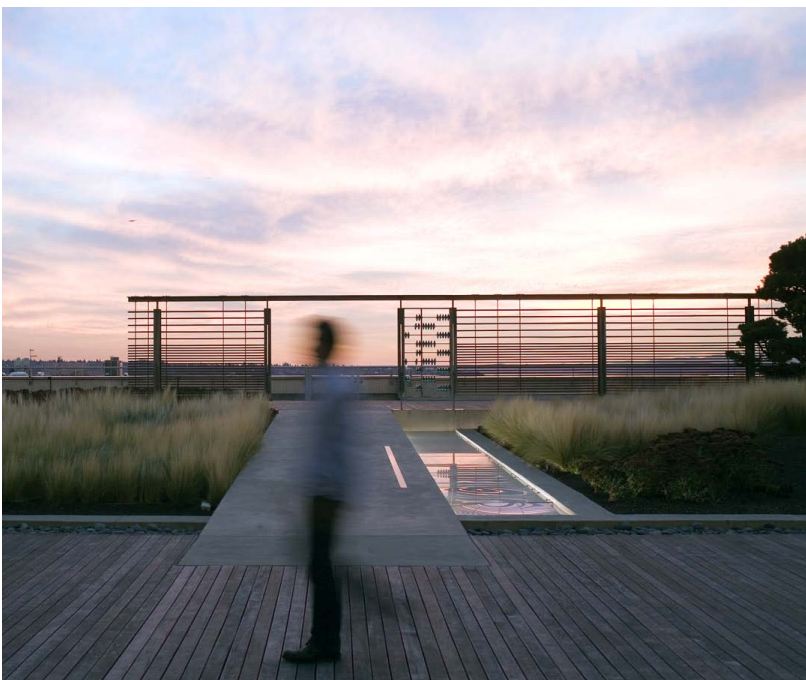


Russell Investments Center

**restaurant
space
with views
and
sunsets on
the house.**



Features

- + Over 6,600 square feet of premier restaurant space available
- + One-of-a-kind 23,000-square-foot outdoor deck overlooking Puget Sound
- + Private outdoor dining with nearby roof deck garden area
- + Sweeping views of Elliott Bay, the Olympic Mountains, Mount Rainier, the Space Needle, and downtown Seattle
- + Large setbacks providing expansive views and natural light from every direction
- + Unique common space open to the public
- + Access through the 2nd Avenue lobby or underground parking garage
- + Mid-rise elevator makes its first stop on the 17th floor for direct, quick access
- + On-site, underground parking available
- + WiFi and soft seating available for a convenient and comfortable atmosphere
- + Renovated main lobby opening in 2010

Amenities

- + Rare opportunity for a restaurateur/caterer to create a dining amenity unlike any other in Seattle
- + Over 5.7 million square feet of office space within a 2-block radius bringing 25,000 professionals to the area daily
- + Offers a built-in customer base with Russell Investments and JP Morgan Chase
- + Opportunity to provide catering to the downtown Seattle business audience and host private events
- + Class H license opportunity
- + Close to Bainbridge and Bremerton ferries
- + Convenient mass transit access, including a Sound Transit light-rail stop at University Street station across the street

**the 17th
floor is
your window
seat.**

**the urban
deck is
your outdoor
patio.**

**puget
sound is
your water
feature.**

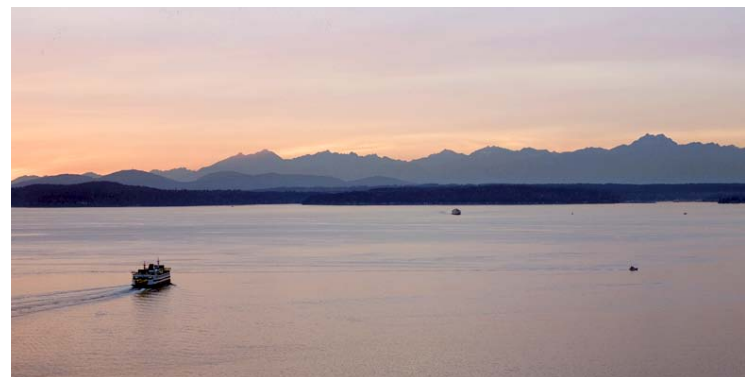
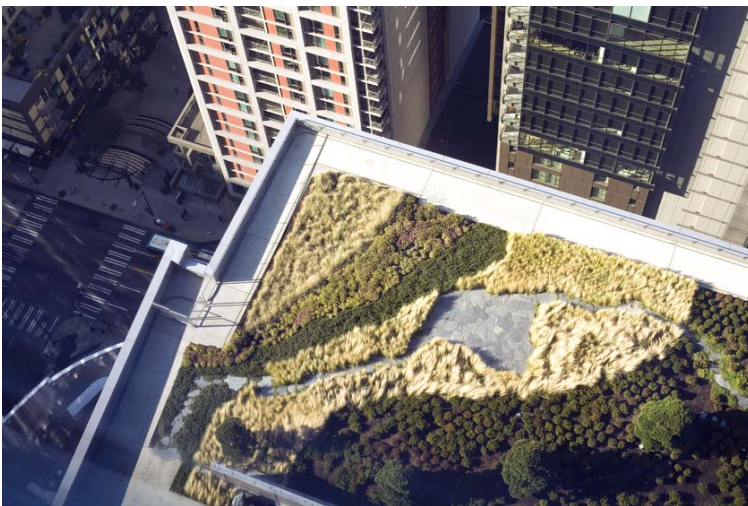


Join the city's best art, shops, and restaurants.

- + ART Restaurant
- + Benaroya Hall/Seattle Symphony
- + Four Seasons Hotel
- + Matt's in the Market
- + Pike Place Market
- + Seattle Art Museum
- + Steelhead Diner
- + Union
- + Washington Athletic Club (WAC)
- + Washington State Convention & Trade Center
- + Waterfront
- + Wild Ginger

Don't miss the sunset. Order dessert.

With the stunning view offered from inside the 17th floor or from the outdoor seating, more guests will be prompted to order appetizers or dessert. The views from these seats make the visit to the 17th floor more than just eating out. It's an experience.



Contact us.

For leasing information:

Anne Marie Koehler, 206.292.6144, annemarie.koehler@cbre.com

Austin Cohn, 206.292.6075, austin.cohn@cbre.com

www.russellinvestmentscenter.com

© 2010 CB Richard Ellis, Inc. This information has been obtained from sources believed reliable. We have not verified it and make no guarantee, warranty or representation about it. Any projections, opinions, assumptions or estimates used are for example only and do not represent the current or future performance of the property. You and your advisors should conduct a careful, independent investigation of the property to determine to your satisfaction the suitability of the property for your needs. CBRE, CB RICHARD ELLIS and the CBRE CB RICHARD ELLIS logo are service marks of CB Richard Ellis, Inc. and/or its affiliated or related companies in the United States and other countries. All other marks displayed on this document are the property of their respective owners. cjm 05-10-11

Leased by:

CBRE
CB RICHARD ELLIS

Managed by:

UNICO

**Retail
24/7.**



belltown

market district

retail core

financial district

cultural district

- Neighborhood Restaurants
1. Campagne
 2. Steelhead Diner
 3. The Pink Door
 4. Matt's in the Market
 5. Place Pigalle
 6. Maximilien
 7. Pike Pub and Brewery
 8. ART Restaurant
 9. Taste
 10. Union
 11. The Triple Door
 12. Wild Ginger
 13. The Brooklyn Seafood, Steak & Oyster House
 14. The Capital Grille
 15. Purple Café and Wine Bar